

# Co-Management to Protect Deepwater Corals of the Western Atlantic

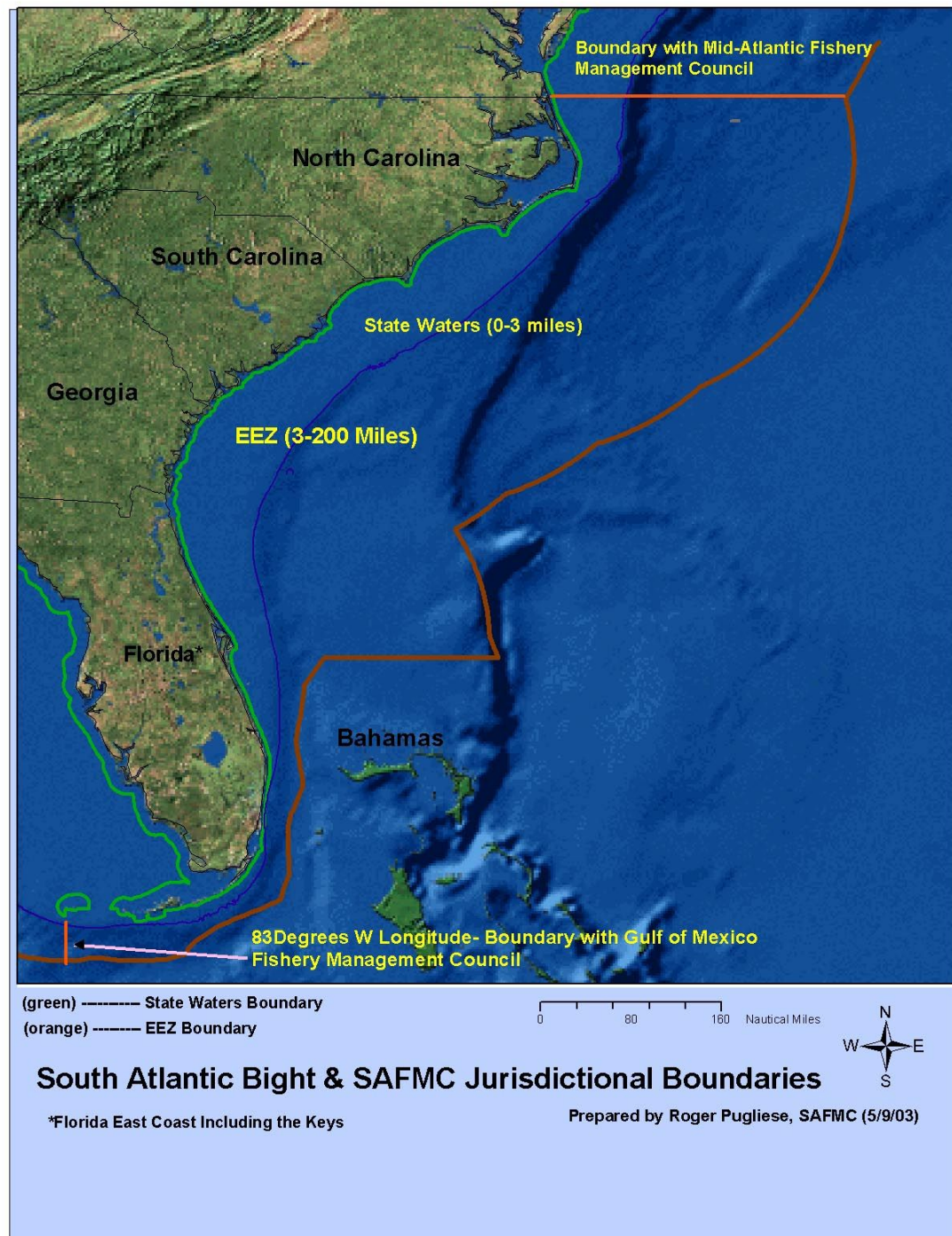
Douglas N. Rader, Ph.D.  
Chief Oceans Scientist

15 June 2021



# South Atlantic Fishery Management Council

Fisheries  
Habitats  
Marine  
Ecosystems



# Emerging Deepwater Fisheries



Rock Shrimp



Royal Red Shrimp

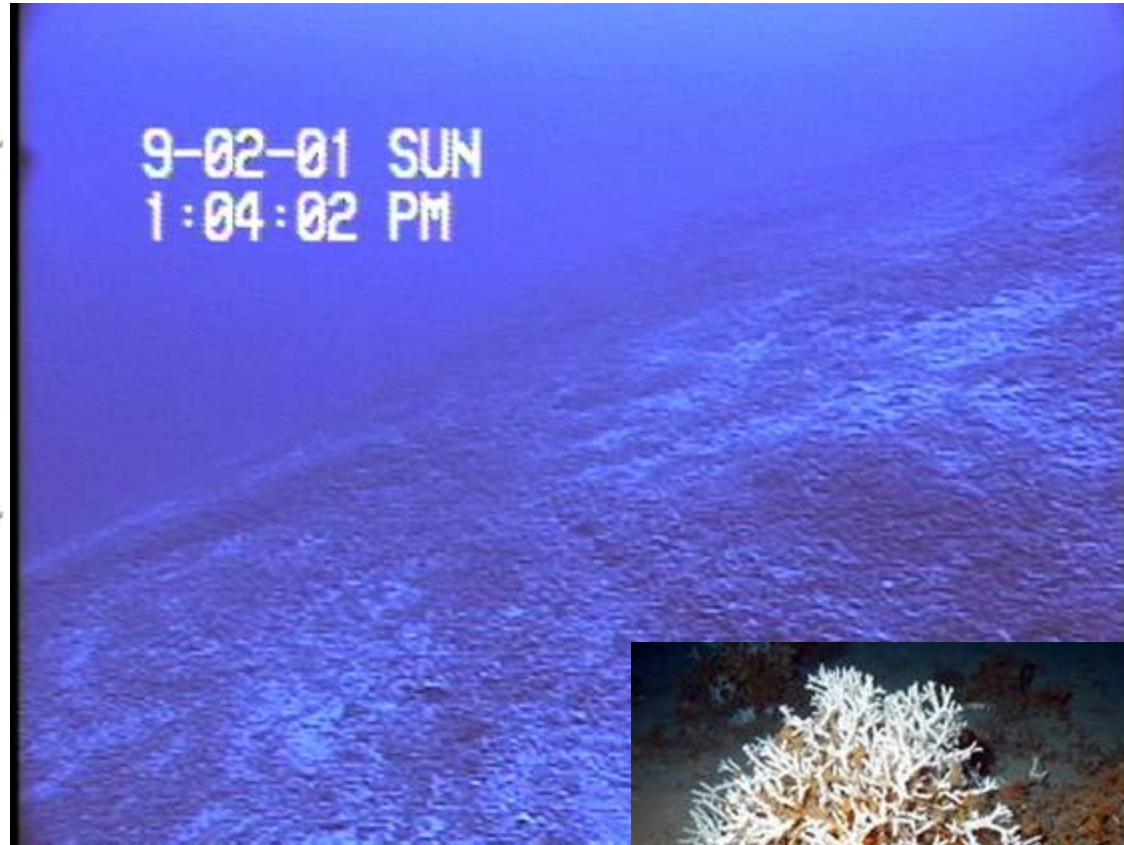
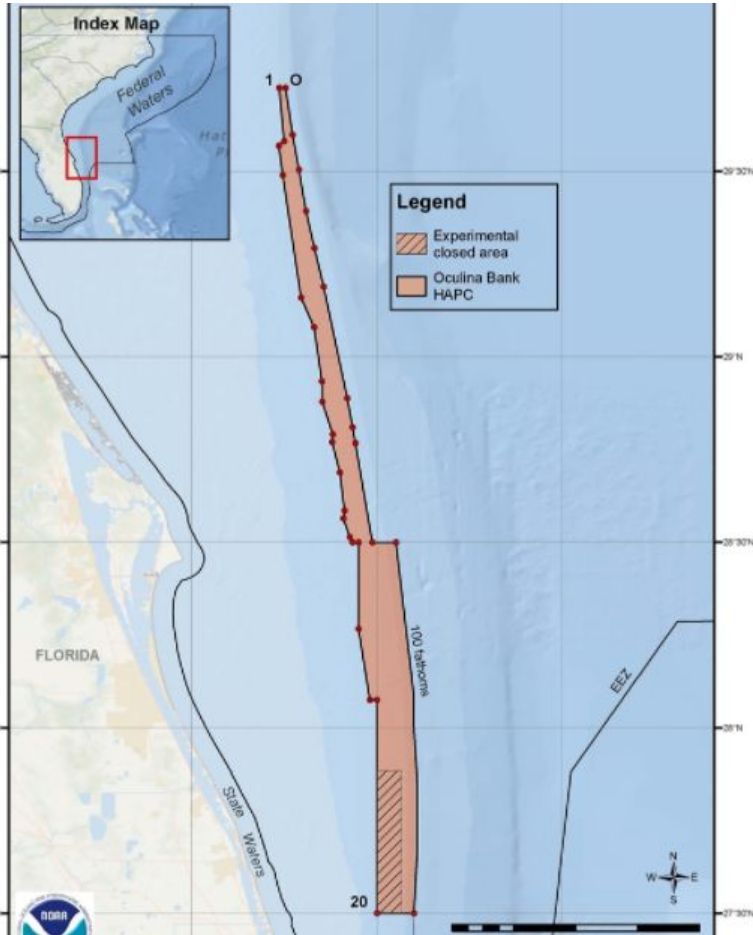


Golden Crab

# Oculina Banks Cautionary Tale

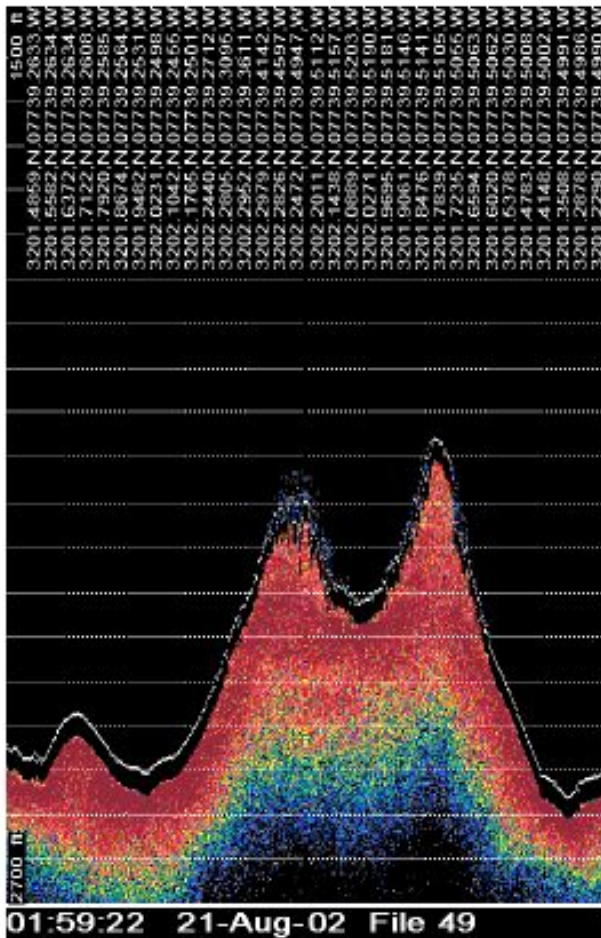
Marine Protected Area

Trawl Tracks on Oculina Banks



NOAA

# Deepwater Coral (Lophelia) Reefs

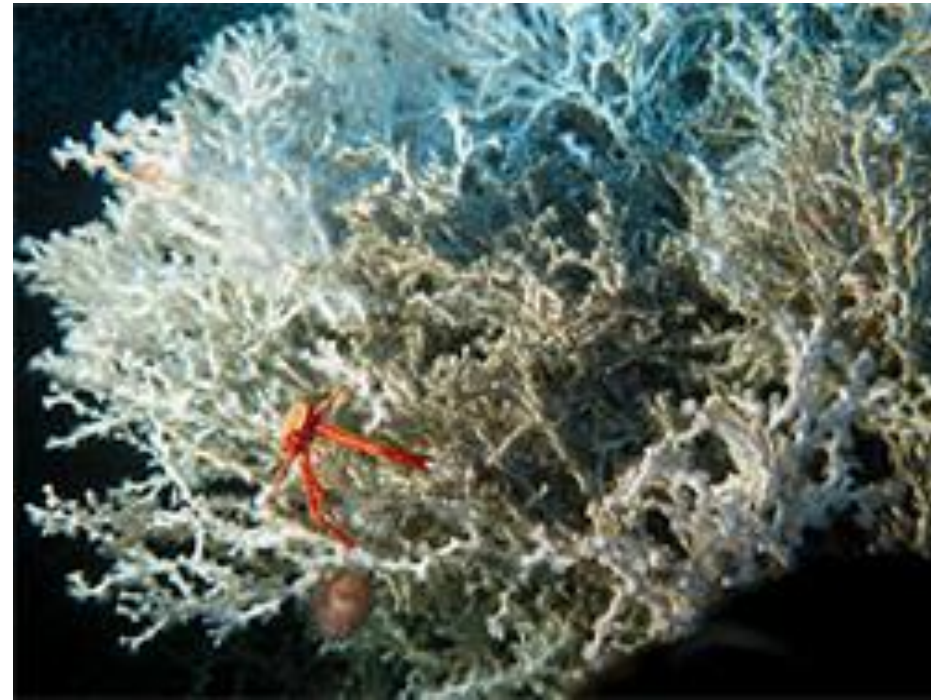


-1500 feet




500 ft tall  
Lithoherm  
1 nm N-S

-2700 feet

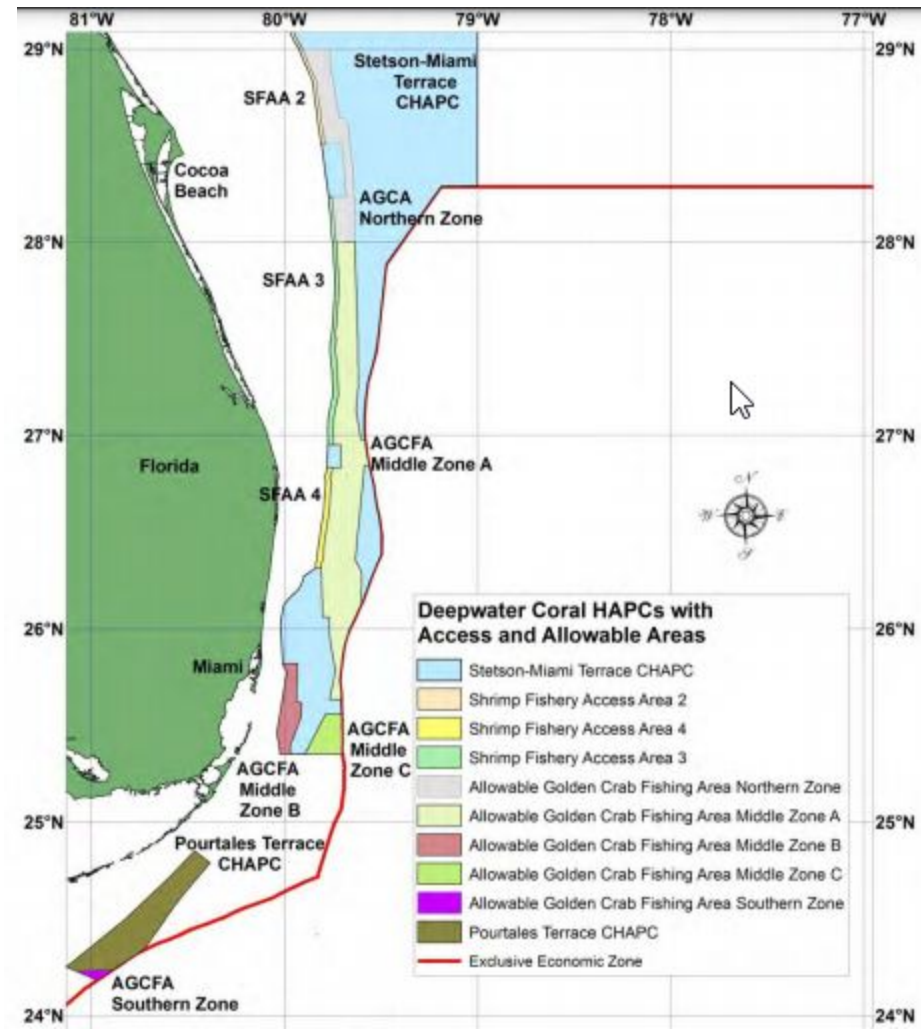
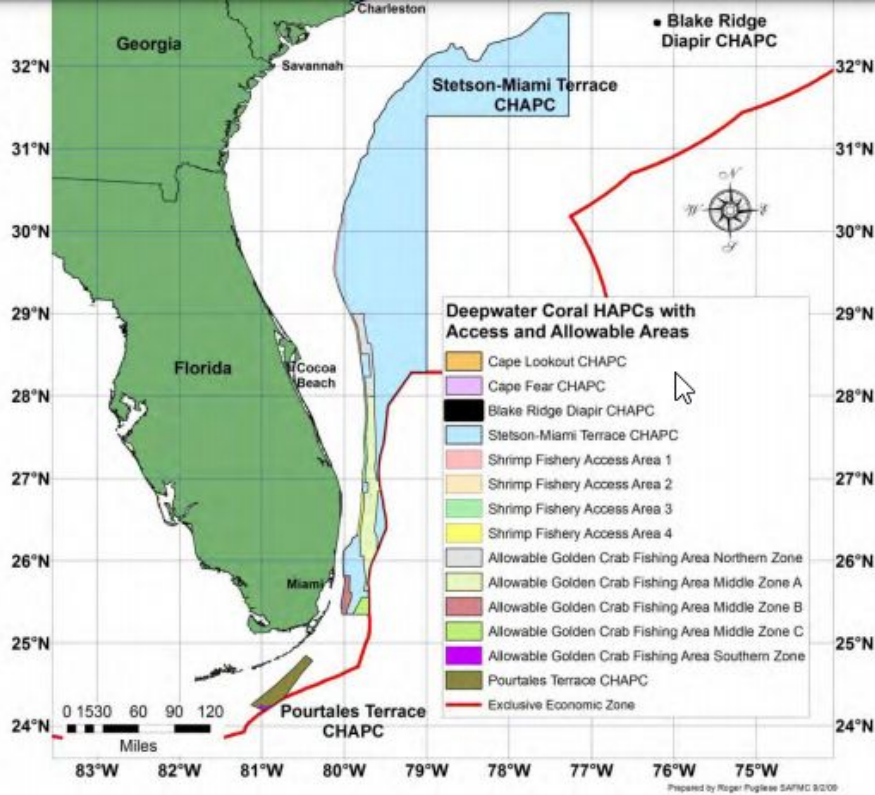


# Habitat and Environmental Protection Advisory Panel

- Agreement to preserve 100% of high profile deepwater reefs
  - Process to characterize those reefs
  - Proposal to SAFMC to designate them as “Habitat Areas of Particular Concern”
  - Protection through a comprehensive habitat amendment to all fishery management plans
- 



# Deepwater Coral Habitat Areas of Particular Concern



Allowable Gear Areas within the HAPCs – away from all high-profile features



Noel Lopez, JdIR



**Doug Rader**  
drader@edf.org  
919-881-2915

Thanks to the many, many people who  
helped make this possible!