

COLUMBUS

European Parliament Event

Accelerating Blue Growth through
Marine and Maritime Knowledge Transfer

**Making Publicly Funded Research
Results Widely Available**

Ned Dwyer: EurOcean

Underpinning Knowledge Transfer

All KT starts with relevant research outputs

Systematic information gathering not yet in place

There is no one place where Knowledge Outputs (KOs) from all research projects are available

Collecting KOs is a significant part of KT activity

Ensuring High Quality Knowledge Outputs

Projects should be active and current

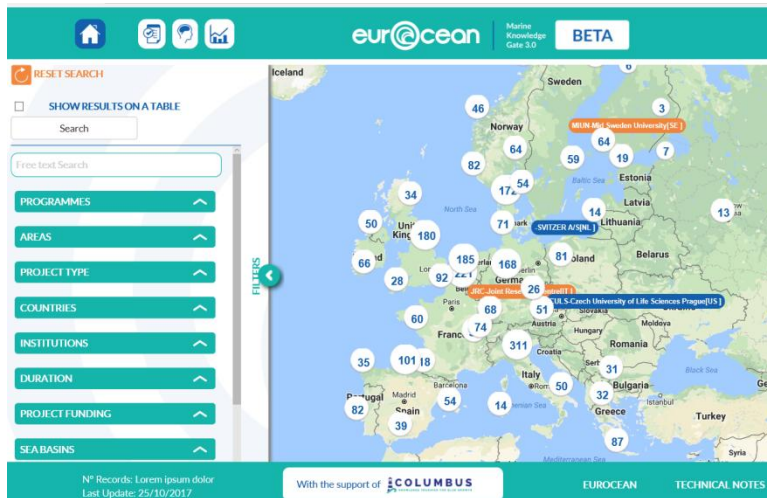
Project co-ordinator needs to be engaged

- Allows understanding of KO and its status
- Understanding if KT has already taken place
- Possibility of packaging KOs for on KT activity

When quality KOs are collected, validated and made publicly available further KT can take place



COLUMBUS: facilitating access to >1000 KOs



- Enhances transparency
- Promotes change of culture
- Gives a window to project results
- Widens audience for KO uptake

Marine Knowledge Gate: <http://kg.eurocean.org>

Towards Systematic KO Collection

Knowledge Transfer is made possible by ease of access to high quality publicly available research results (KOs)

KO validation and identification of potential end-users and applications should be embedded in project activities and supported by external actors