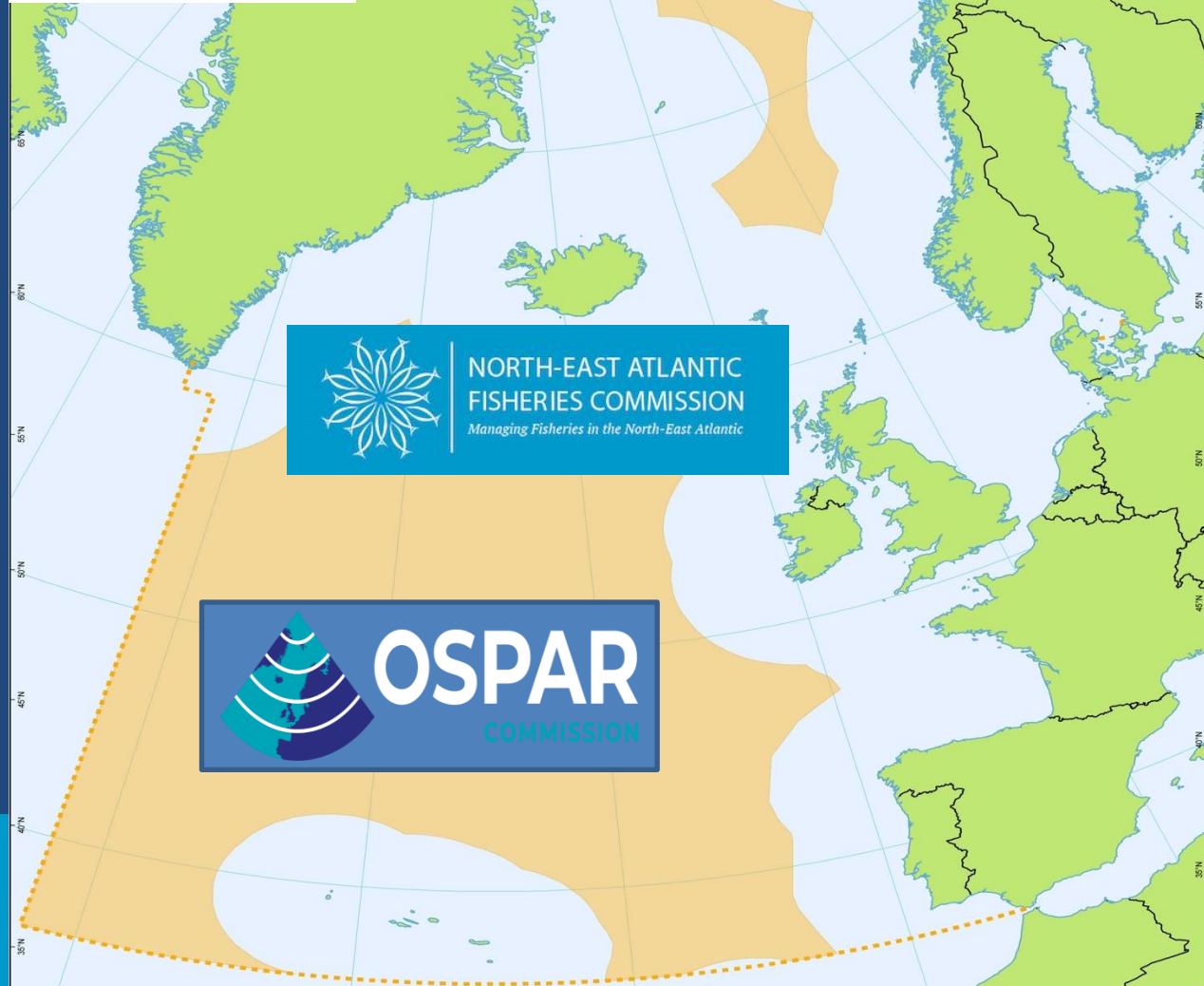




North-East Atlantic Co-operation

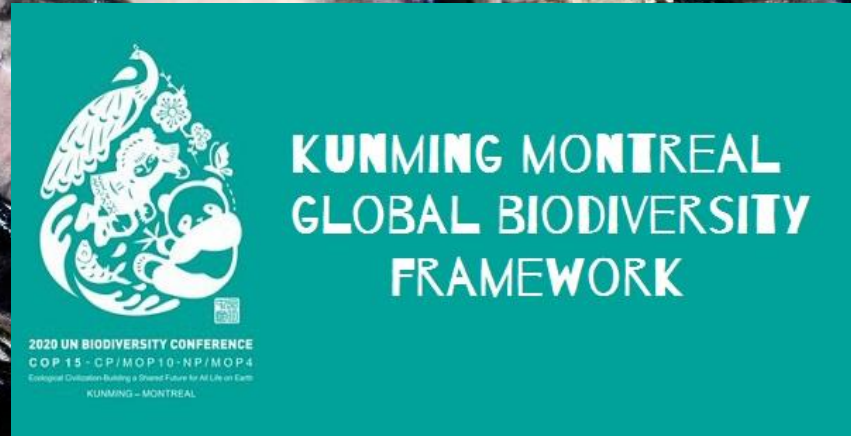
Darius Campbell
North-East Atlantic Fisheries Commission



Overlapping

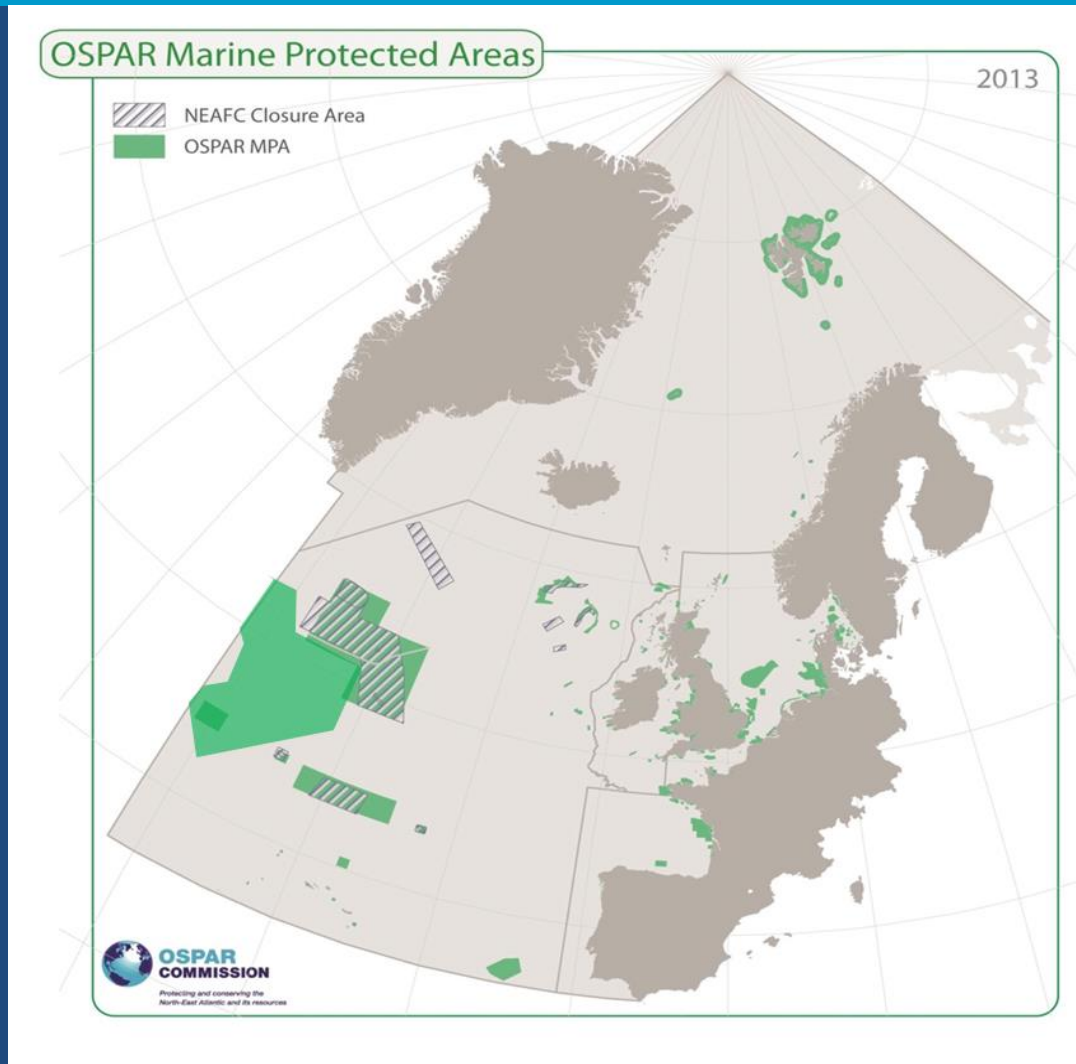
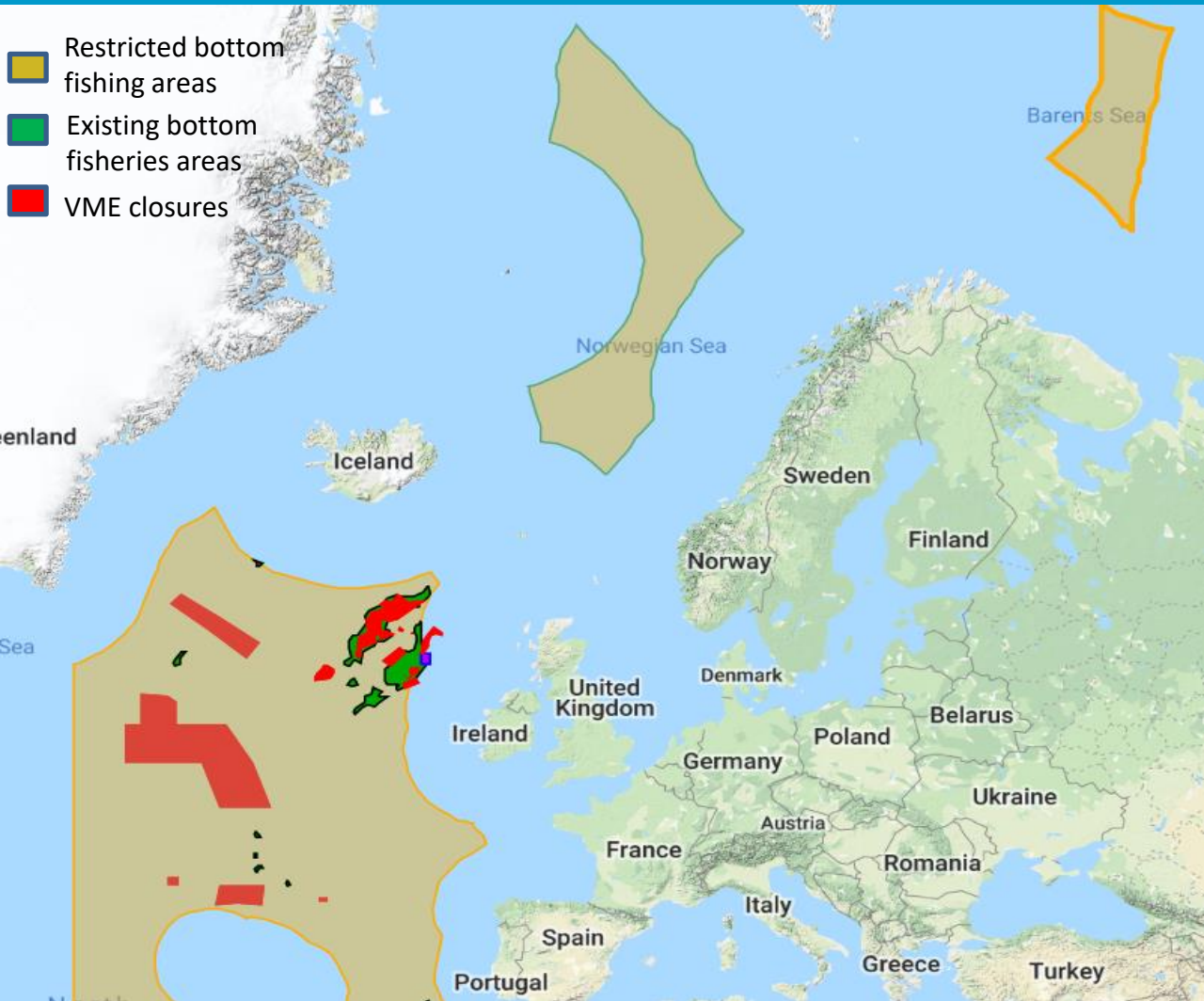
- Areas
- Countries
- Objectives

CBD - BBNJ - Sustainable Use



Balancing environment, society and economics

30x30...area-based measures as an example of implementation



Specifics: Other Effective Area-Based Conservation Measures (OECM)



- ICES : Testing, templates, scientific advice to NEAFC.
- OSPAR: OECM criteria and identification
- NEAFC: OECM identification

Overlap of measures, OSPAR and NEAFC

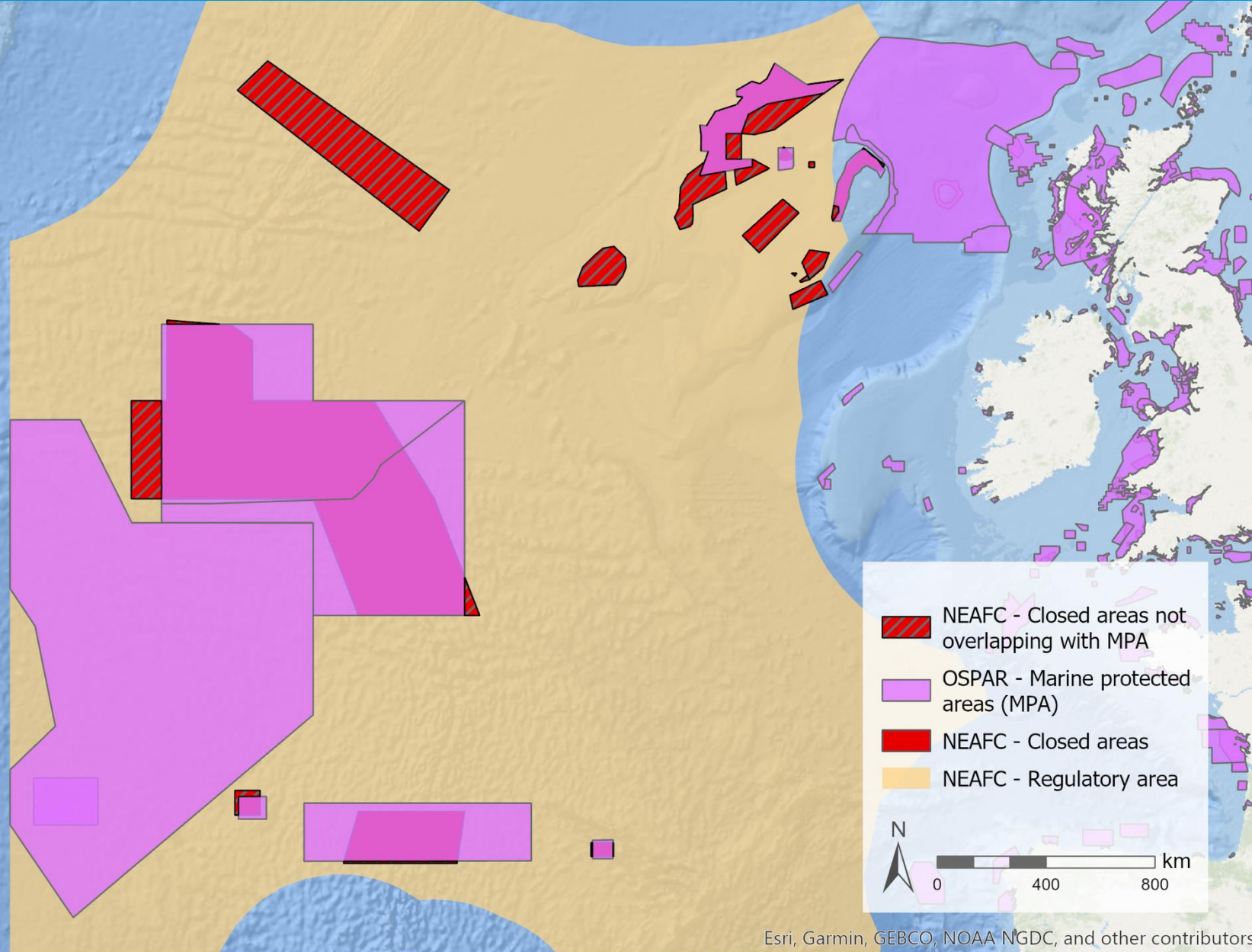
Example of a potential designation:

MPA = 21% of ABNJ

VME closure = 7% of ABNJ

VME closure not overlapping with MPA =
OECM = 2% of ABNJ

Total MPA + OECM = 23% of ABNJ



MPAs and OECMs are measured in 2D,
the management of the oceans is in 3D



NEAFC

Image from Gameloft/Playing4thePlanet.org

Monitoring and Control/Regional Assessments/Scientific Advice



Pragmatic Ecosystem Based Management

Balancing human activities & environmental stewardship in a

ICES
CIEM

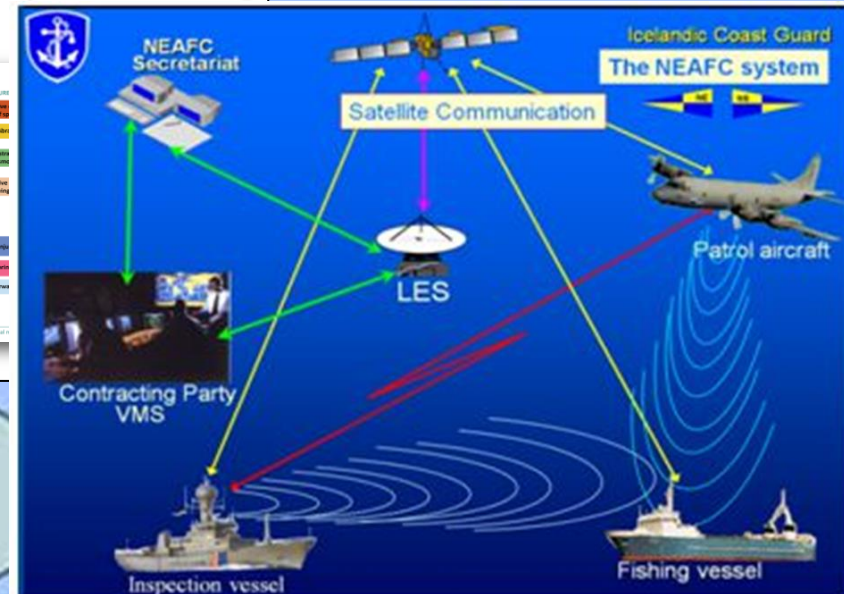
This slide features a central graphic with icons representing a sun, a fish, a wind turbine, a factory, and a group of people. The text "Pragmatic Ecosystem Based Management" is at the top left, and "Balancing human activities & environmental stewardship in a" is at the bottom left. The ICES CIEM logo is in the top right corner.

ICES Ecosystem overviews

Management Politics Social & use Chlorophyll Benthic Habitat Pelagic Habitat

ICES
CIEM

This slide provides an overview of ICES ecosystem data. It includes several maps and charts: "Management Politics" and "Social & use" maps of the North-East Atlantic; "Chlorophyll", "Benthic Habitat", and "Pelagic Habitat" maps showing environmental data; and a "NORTH SEA HUMAN ACTIVITIES" flowchart. The flowchart lists activities like Fishing, Coastal construction, Maritime transport, Offshore structures, Tourism and recreation, Navigation dredging, Telecommunications, Aggregate extraction, Military, and Renewable energy, and maps them to pressures such as Substrate capture, Substrate removal, Selective harvesting, Death or loss, and Undersize.



The Future?



A bord d'un Paquebot sous-marin.

- Joint narrative
- Cooperation on biodiversity assessment
- Assessment of actions to implement MPAs

SUSTAINABLE OCEAN INITIATIVE (SOI)

GLOBAL DIALOGUE WITH REGIONAL SEAS ORGANIZATIONS AND REGIONAL FISHERIES BODIES ON ACCELERATING PROGRESS TOWARDS THE AICHI BIODIVERSITY TARGETS

SOI 세계 해양-수산 국제기구 포럼 / 26-29 September 2016 Seoul, Republic of Korea

Sponsored by RO Korea, Japan and European Commission



15 RSOs out of 18 (20 rep)

15 RFBs out of 51
(17 rep)

18 EU/national
gov/institutions
(53 rep)

10 UN orgs
(17 rep)

120

8 Int'l orgs
(13 rep)